

# posh textiles

Collection Name : Terra Verde  
Product Name : RIVERBANK-NATURAL



## FABRIC INFORMATION

ACT Symbols:

Collection: Terra Verde

Width: 55 inches

Contents: 97% Recycled Solution Dyed Olefin, 3% Polyester

Color Family: Neutral

Pattern:

3 Years warranty

Repeat: Approx.V-9.85" H-5.90"

Cleaning: Fabric Care » WS (Water or Solvent), Bleach (4:1)

Weight: 487 GSM

Shown Railroaded: No

## TECHNICAL SPECIFICATIONS

Wear Test: 90000 Double Rubs (Wyzenbeek, Cotton Duck)

Fire Resistance: CAL117-2013, NFPA 260

Lightfastness: 1500 Hours

## APPLICATIONS

Guestroom Seating

Residential Seating

Food & Beverage Seating

Headboard

Nightclub

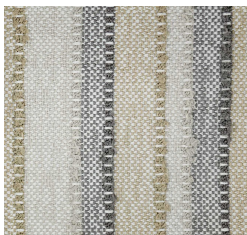
Higher Education

Healthcare

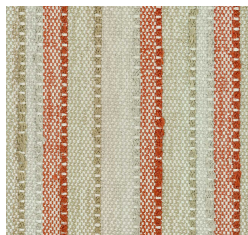
Senior Living

Outdoor Seating

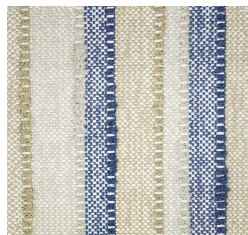
## COLOR OPTIONS



RIVERBANK-CHARCOAL



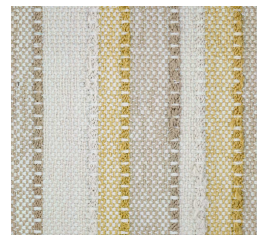
RIVERBANK-CORAL



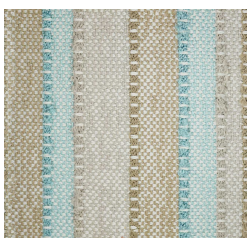
RIVERBANK-DENIM



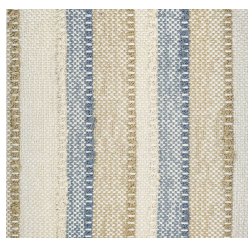
RIVERBANK-FERN



RIVERBANK-GOLD



RIVERBANK-IRIS



RIVERBANK-SLATE

## Posh Textiles

W: +1 (212) 629-7241

info@poshtextiles.com

<https://poshtextiles.com>

Actual product may  
differ in scale,color  
texture and finish

© 2024 Posh Textiles

\*Act Registered  
Certificate Marks