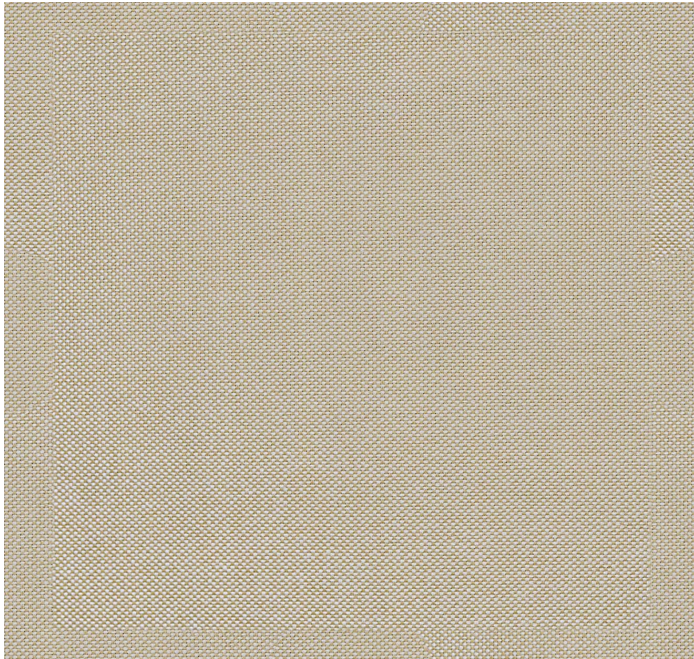


posh textiles

Collection Name : Terra Verde
Product Name : LUSH-GOLD



FABRIC INFORMATION

ACT Symbols:

Collection: Terra Verde

Width: 55 inches

Contents: 100% Recycled Solution Dyed Olefin

Color Family: Gold

Pattern:

3 Years warranty

Repeat: Approx.V-14.17" H-13.78"

Cleaning: Fabric Care » WS (Water or Solvent), Bleach (4:1)

Weight: 279 GSM

Shown Railroaded: No

TECHNICAL SPECIFICATIONS

Wear Test: 70000 Double Rubs (Wyzenbeek, Cotton Duck)

Fire Resistance: CAL117-2013, NFPA 260

Lightfastness: 1500 Hours

APPLICATIONS

Guestroom Seating

Residential Seating

Food & Beverage Seating

Headboard

Nightclub

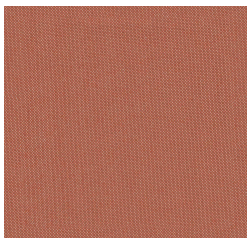
Higher Education

Healthcare

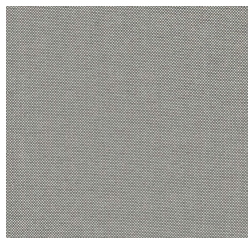
Senior Living

Outdoor Seating

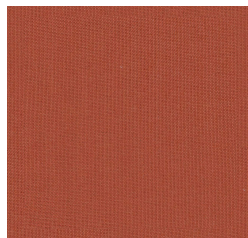
COLOR OPTIONS



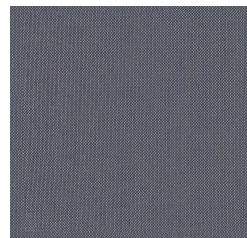
LUSH-BRICK



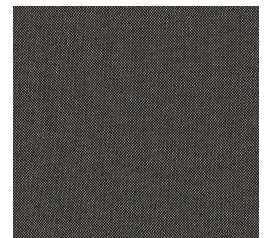
LUSH-CHARCOAL



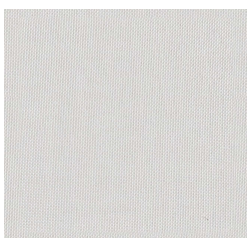
LUSH-CORAL



LUSH-DENIM



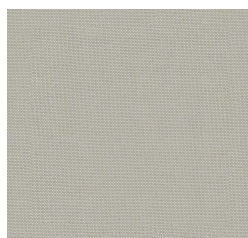
LUSH-EBONY



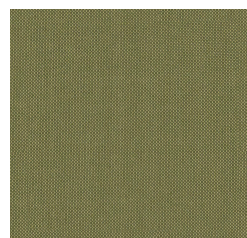
LUSH-ECRU



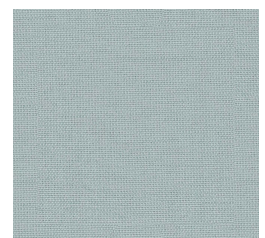
LUSH-FERN



LUSH-FOG



LUSH-FOREST

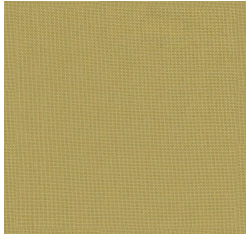


LUSH-IRIS

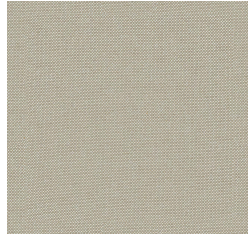
posh textiles



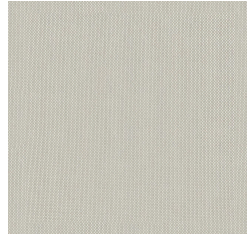
LUSH-MARINE



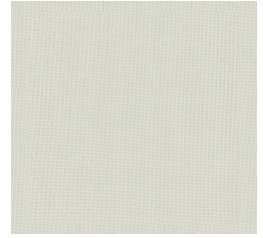
LUSH-MUSTARD



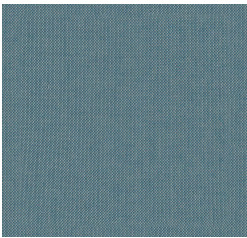
LUSH-NATURAL



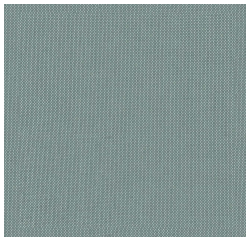
LUSH-PARCHMENT



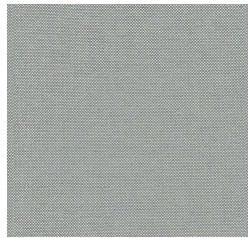
LUSH-PEARL



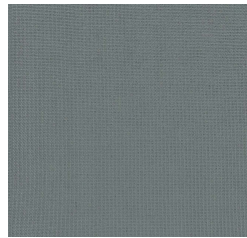
LUSH-SAPPHIRE



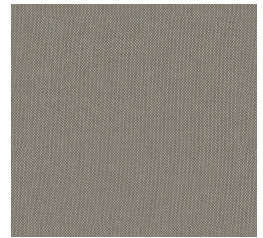
LUSH-SEA MIST



LUSH-SLATE



LUSH-SMOKEY BLUE



LUSH-TAUPE