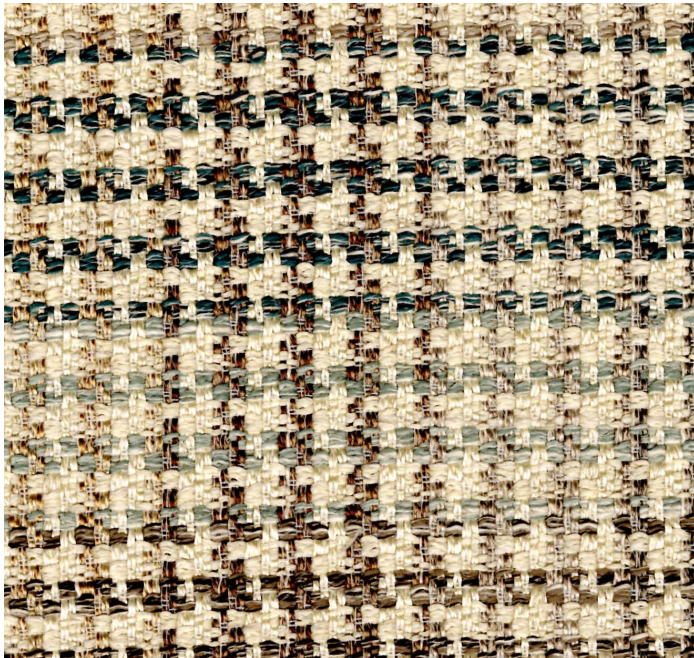



posh textiles

Collection Name : Country
Product Name : BEATRIZ-TEAL



FABRIC INFORMATION

ACT Symbols: 
Collection: Country
Width: 54 inches
Contents: 71% Polyester, 15% Cotton, 7% Linen, 7% Viscose
Color Family: Teal
Pattern: Dogstooth / Houndstooth
3 years warrenty
Repeat: Approx.V-7.00" H-7.00"
Cleaning: Fabric Care » W (Water)
Weight: 449 GSM
Shown Railroaded: No

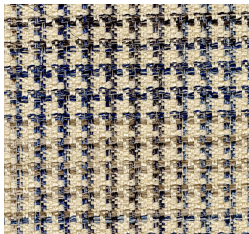
TECHNICAL SPECIFICATIONS

Wear Test: 100,000 Double Rubs (Wyzenbeek, Cotton Duck)
Fire Resistance: CAL117-2013, NFPA 260, UFAC I

APPLICATIONS

Guestroom Seating
Residential Seating
Food & Beverage Seating
Nightclub
Higher Education
Senior Living
IMO

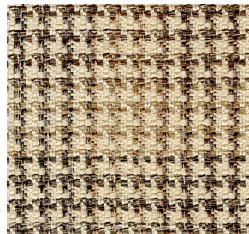
COLOR OPTIONS



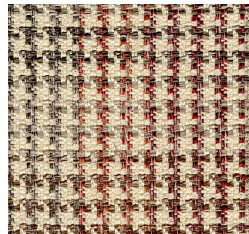
BEATRIZ-CADET



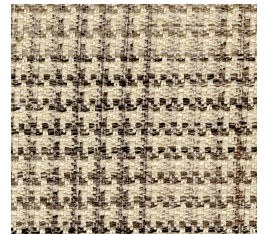
BEATRIZ-HONEY



BEATRIZ-NATURAL



BEATRIZ-RUST



BEATRIZ-SLATE