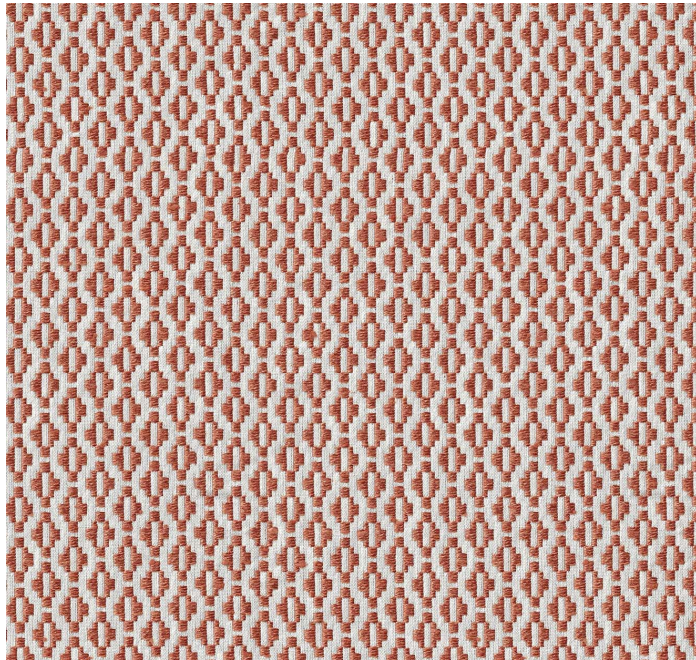



# posh textiles

Collection Name : Threadwork  
Product Name : GRIFFIN-RUST



## FABRIC INFORMATION

ACT Symbols:   
Collection: Threadwork  
Width: 54 inches  
Contents: 65%Polyester, 35%Cotton  
Color Family: Orange  
Pattern: Geometric  
3 Years warrenty  
Repeat: Approx.V-0.75",H-1.00"  
Cleaning: Fabric Care » W (Water)  
Weight: 572 GSM  
Shown Railroaded: No

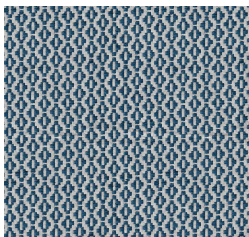
## TECHNICAL SPECIFICATIONS

Wear Test: 100,000 Double Rubs (Wyzenbeek, Cotton Duck)  
Fire Resistance: CAL117-2013, NFPA 260, UFAC I, NFPA 701 with treatment

## APPLICATIONS

Guestroom Seating  
Wall Panels  
Residential Seating  
Food & Beverage Seating  
Drapery  
Headboard  
Nightclub  
Higher Education  
Senior Living  
IMO

## COLOR OPTIONS



GRIFFIN-DENIM



GRIFFIN-FERN



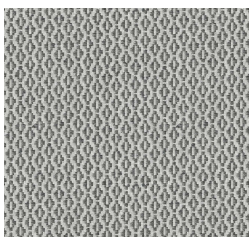
GRIFFIN-FOG



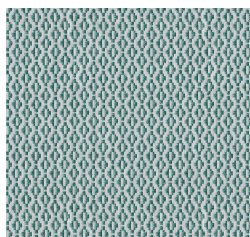
GRIFFIN-GOLD



GRIFFIN-NATURAL



GRIFFIN-SLATE



GRIFFIN-TEAL