

# posh textiles

Collection Name : Eternal  
Product Name : EMBER-EARTH

## FABRIC INFORMATION

ACT Symbols: 

Collection: Eternal

Width: 54 inches

Contents: 100% Polyester

Color Family: Brown

Pattern: Textured

3 years warranty

Repeat: Approx. None

Cleaning: Fabric Care » W (Water)

Weight: 480 GSM

Shown Railroaded: No

## TECHNICAL SPECIFICATIONS

Wear Test: 100,000 Double Rubs

(Wyzenbeek, Cotton Duck)

Fire Resistance: CAL117-2013, NFPA  
260, UFAC I, NFPA 701 with treatment,  
IMO 8 with treatment

## APPLICATIONS

Guestroom Seating

Wall Panels

Residential Seating

Food & Beverage Seating

Drapery

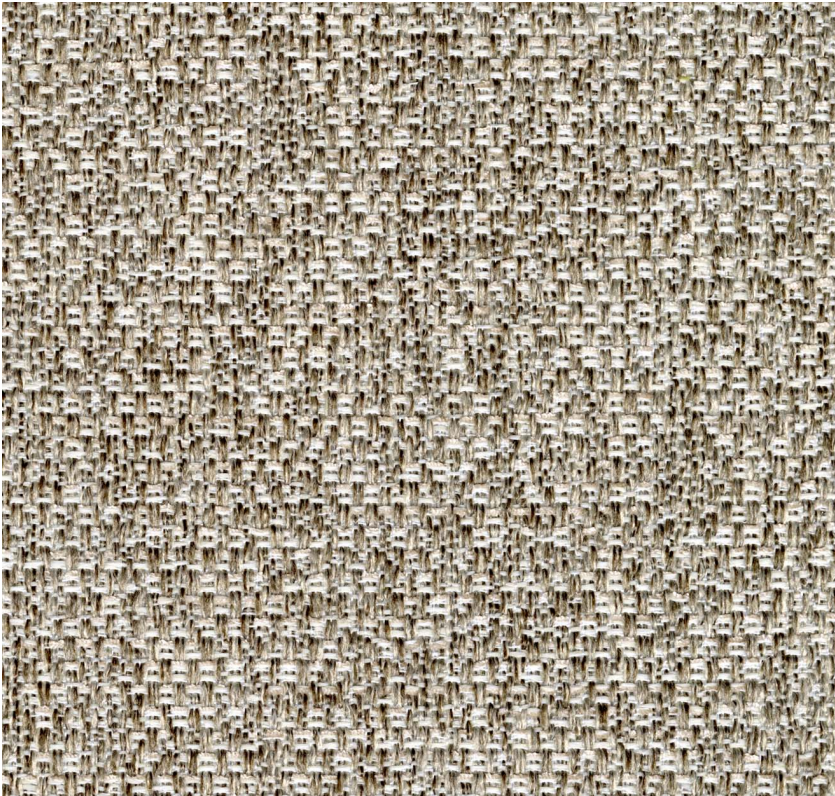
Headboard

Nightclub

Higher Education

Senior Living

IMO



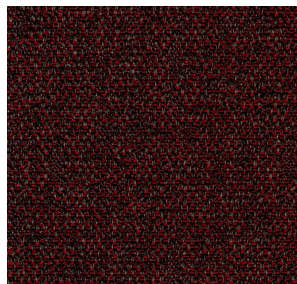
## COLOR OPTIONS



EMBER-CHARCOAL



EMBER-MOSS



EMBER-SCARLET



EMBER-SLATE

## Posh Textiles

W: +1 (212) 629-7241

info@poshtextiles.com

<https://poshtextiles.com>

Actual product may  
differ in scale,color  
texture and finish

© 2024 Posh Textiles

\*Act Registered  
Certificate Marks