

posh textiles

Collection Name : Country
Product Name : ELLIS-TEAL

FABRIC INFORMATION

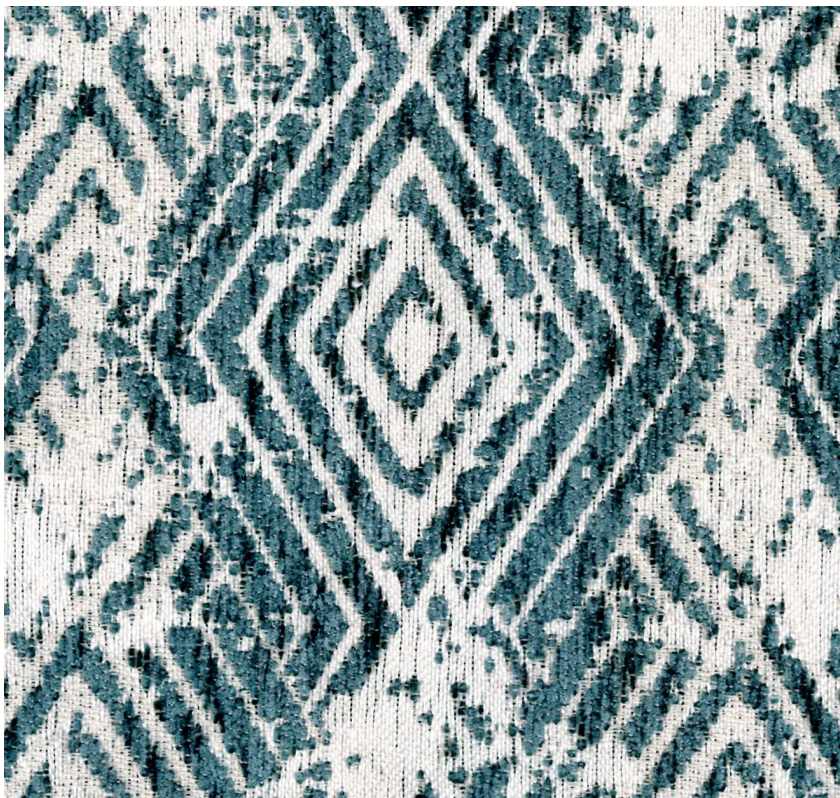
ACT Symbols: 
Collection: Country
Width: 54 inches
Contents: 100% Polyester
Color Family: Teal
Pattern: Argyle
3 years warrenty
Repeat: Approx.V-8.25" H-6.5"
Cleaning: Fabric Care » W (Water)
Weight: 408 GSM
Shown Railroaded: Yes

TECHNICAL SPECIFICATIONS

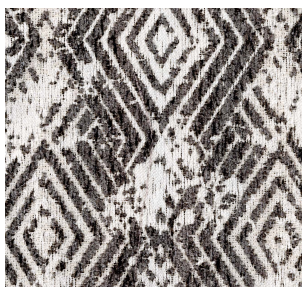
Wear Test: 100,000 Double Rubs
(Wyzenbeek, Cotton Duck)
Fire Resistance: CAL117-2013, NFPA
260, UFAC I, IMO 8 with treatment

APPLICATIONS

Guestroom Seating
Wall Panels
Residential Seating
Food & Beverage Seating
Headboard
Nightclub
Higher Education
Senior Living
IMO



COLOR OPTIONS



ELLIS-CHARCOAL



ELLIS-DENIM



ELLIS-KIWI



ELLIS-SUNKIST