


# posh textiles

Collection Name : Country  
Product Name : ELLIS-KIWI

## FABRIC INFORMATION

ACT Symbols:   
Collection: Country  
Width: 54 inches  
Contents: 100% Polyester  
Color Family: Green  
Pattern: Argyle  
3 years warranty  
Repeat: Approx.V-8.25" H-6.5"  
Cleaning: Fabric Care » W (Water)  
Weight: 408 GSM  
Shown Railroaded: Yes

## TECHNICAL SPECIFICATIONS

Wear Test: 100,000 Double Rubs  
(Wyzenbeek, Cotton Duck)  
Fire Resistance: CAL117-2013, NFPA  
260, UFAC I, IMO 8 with treatment

## APPLICATIONS

Guestroom Seating  
Wall Panels  
Residential Seating  
Food & Beverage Seating  
Headboard  
Nightclub  
Higher Education  
Senior Living  
IMO



## COLOR OPTIONS



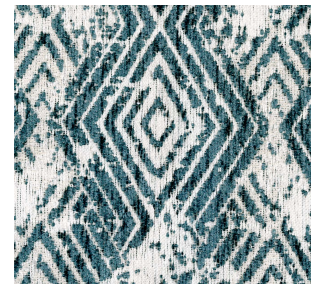
ELLIS-CHARCOAL



ELLIS-DENIM



ELLIS-SUNKIST



ELLIS-TEAL

## Posh Textiles

W: +1 (212) 629-7241  
info@poshtextiles.com  
<https://poshtextiles.com>

Actual product may  
differ in scale,color  
texture and finish

© 2024 Posh Textiles

\*Act Registered  
Certificate Marks