

posh textiles

Collection Name : Country
Product Name : ELLIS-CHARCOAL

FABRIC INFORMATION

ACT Symbols: 

Collection: Country

Width: 54 inches

Contents: 100% Polyester

Color Family: Gray

Pattern: Argyle

3 years warrenty

Repeat: Approx.V-8.25" H-6.5"

Cleaning: Fabric Care » W (Water)

Weight: 408 GSM

Shown Railroaded: Yes

TECHNICAL SPECIFICATIONS

Wear Test: 100,000 Double Rubs
(Wyzenbeek, Cotton Duck)

Fire Resistance: CAL117-2013, NFPA
260, UFAC I, IMO 8 with treatment

APPLICATIONS

Guestroom Seating
Wall Panels
Residential Seating
Food & Beverage Seating
Headboard
Nightclub
Higher Education
Senior Living
IMO



COLOR OPTIONS



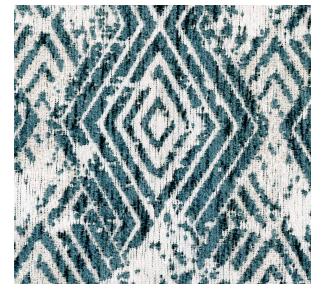
ELLIS-DENIM



ELLIS-KIWI



ELLIS-SUNKIST



ELLIS-TEAL

Posh Textiles

W: +1 (212) 629-7241

info@poshtextiles.com

<https://poshtextiles.com>

Actual product may
differ in scale,color
texture and finish

© 2024 Posh Textiles

*Act Registered
Certificate Marks