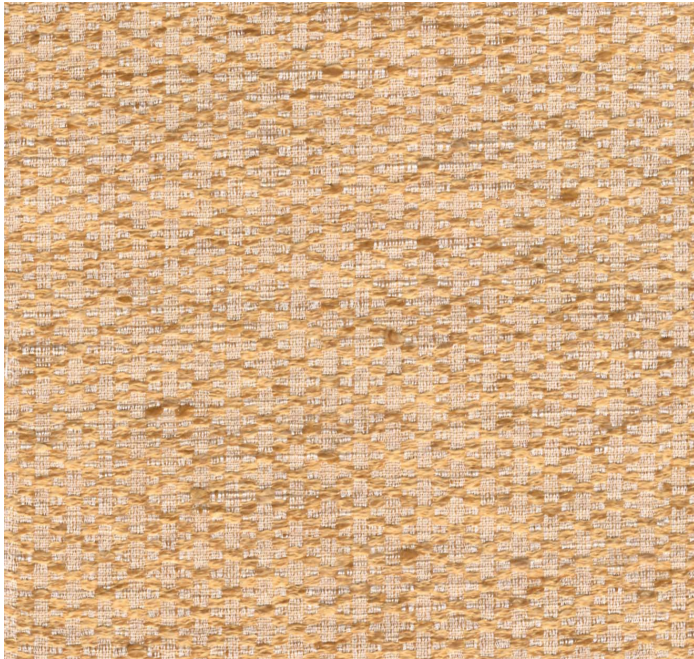



Collection Name : Riviera
Product Name : RALPH-OAK



FABRIC INFORMATION

ACT Symbols: 
Collection: Riviera
Width: 54 inches
Contents: 81% Polyester, 19% Nylon
Color Family: Neutral
Pattern: Geometric
3 years warrenty
Repeat: Approx.V-0.25" H-0.50"
Cleaning: Fabric Care » W (Water)
Weight: 440 GSM
Shown Railroaded: No

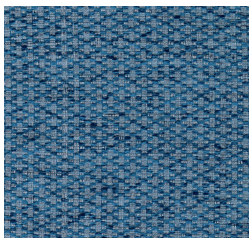
TECHNICAL SPECIFICATIONS

Wear Test: 50,000 Double Rubs (Wyzenbeek, Cotton Duck)
Fire Resistance: CAL117-2013, NFPA 260, UFAC I, NFPA 701
with treatment, IMO 8 with treatment

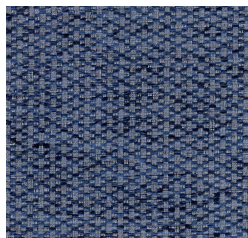
APPLICATIONS

Guestroom Seating
Wall Panels
Residential Seating
Food & Beverage Seating
Headboard
Nightclub
Higher Education
Senior Living
IMO

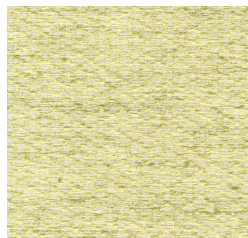
COLOR OPTIONS



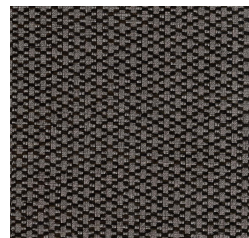
RALPH-ALPINE



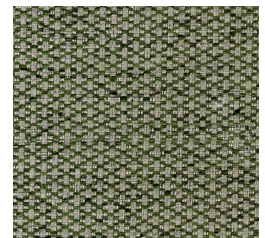
RALPH-DENIM



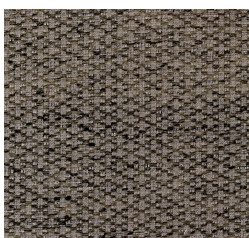
RALPH-MOSS



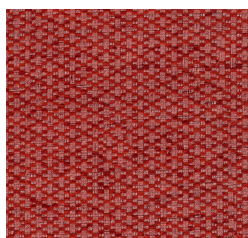
RALPH-NIGHT



RALPH-OIL



RALPH-PLATINUM



RALPH-POPPY